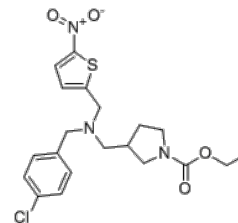


Product Name : SR9009
Cat. No. : PC-47043
CAS No. : 1379686-30-2
Molecular Formula : C₂₀H₂₄ClN₃O₄S
Molecular Weight : 437.9
Target : Rev-ErbA
Solubility : 10 mM in DMSO



Biological Activity

Stenabolic (SR9009) is a potent, synthetic **REV-ERB** agonist with IC₅₀s of 670 nM and 800 nM for REV-ERB- α and for REV-ERB- β , respectively.

SR9009 decreases circadian locomotor activity during the dark phase and to alter the expression pattern of core clock genes in the hypothalami of mice.

SR9009 (i.p. two times a day for 30 days) displays decreased fat mass and markedly improved dyslipidemia and hyperglycemia.

References

Laura A Solt, et al. *Nature*. 2012 Mar 29;485(7396):62-8.

Caution: Product has not been fully validated for medical applications. Lab Use Only!

E-mail: tech@probechem.com